

PART OF N.E. 1/4, SEC. 27, T.5N., R.1W., S.L.B. & M.  
**THE ORCHARD AT UINTAH**  
 LOTS 5,6,9-11, AMD. LOTS 7 & 8

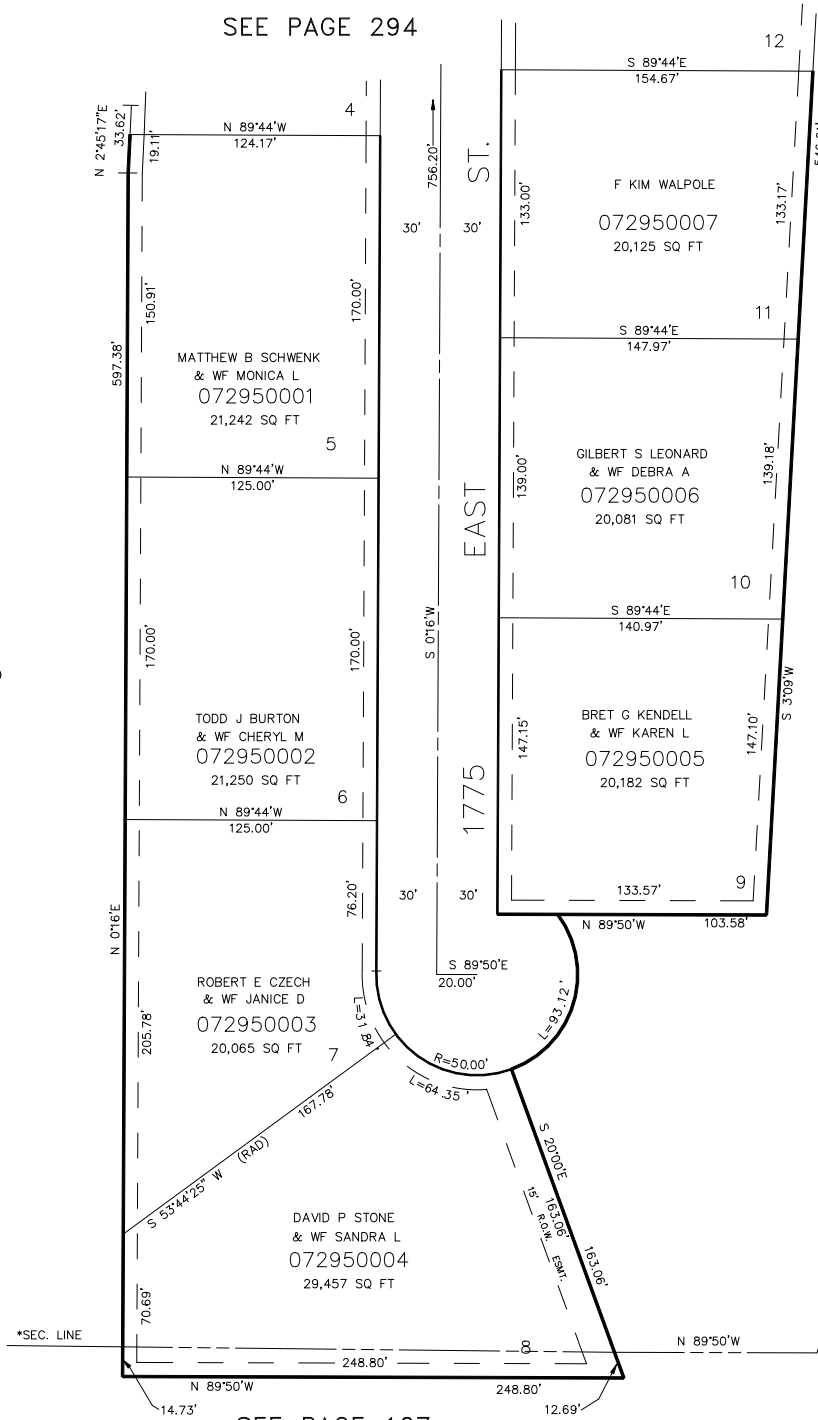
295

TAXING UNIT: 55

IN UINTAH TOWN

SCALE 1"=50'

SEE PAGE 294



SEE PAGE 105

SEE PAGE 105

7' UTILITY & DRAINAGE EASEMENTS EACH SIDE OF PROPERTY LINES AS INDICATED BY DASHED LINES EXCEPT WHERE OTHERWISE SHOWN.

FOR COMPLETE ENG. DATA SEE ORIGINAL DEDICATION PLAT IN BOOK 26, PAGE 93 OF RECORDS.  
 \*AMD. LOTS 7 & 8, SEE ORIGINAL DEDICATION PLAT IN BOOK 30, PAGE 87 OF RECORDS.

\*SEE CORRECTION AFFT. 7-26-91 BOOK 1604, PAGE 1066.

SEE PAGE 107